

## GETTING STARTED - ETOLL

An etoll account is a prepaid online account that allows vehicles to utilize card as a cashless form of payment at Toll Plazas.



eToll is a product within our ePass solutions which also includes:

- eFuel - connect your fuel Cards to your account to make cashless payment at selected fuel stations within Zambia.

### Locations

eToll is accepted at all NRFA Toll Plazas and Weighbridges Operating as Toll Plazas  
\*\*eToll is not accepted at Border Points of Entry operated by the RTSA

### Step 1: Registration

To sign up for eToll for your fleet of vehicles - go to our website [www.epass.co.zm](http://www.epass.co.zm) and on the home page - Go to the 'Register Now' Section and click on Register under eToll Fleet.

The screenshot shows the ePass website's registration interface. At the top, there are navigation links for 'Features', 'Sign Up', and 'Contact', along with a 'Sign in' button. The main heading is 'Register Now'. Below this, there are three columns representing different services:

- ePass Individual** (1 to 5 Cards): Description: 'Buy fuel, pay for road tolls and access roadside assistance for your household, small business or individual employees in a secure and convenient way. Access your account online or use the mobile applications.' Button: 'Coming Soon'.
- eToll Fleet** (5+ Cards): Description: 'Manage your fleet with a cashless eToll payment solution and world class online reporting solutions that will make Toll Management in your company faster, convenient, secure and efficient.' Button: 'Register' (circled in red). Below it is a 'Getting Started Guide' button.
- eFuel Fleet** (5+ Cards): Description: 'Manage your fleet with automated cashless payment solution by opening an eFuel account. Our world class online reporting solutions will make toll and fuel management in your company faster.' Button: 'Register'. Below it is a 'Getting Started Guide' button.

Complete the registration form and a member of the operations team will contact you when your account is set up and provide you with your login credentials.

## **Step 2: Recharging Your eToll account**

Your eToll Account is pre-paid. Before your new cards are activated and delivered, an initial payment must be made into your eToll account. Payments can be made through Book Now Zambia Ltd by cheque, cash deposit or electronic bank transfer to :

Account Name : BOOK NOW ZAMBIA LIMITED

Account: Number: 62560754931 (ZMW)

Bank Name : First National Bank (FNB)

Branch Number 260014 ( Acacia Park)

Please reference your company name and/or invoice number. Once the proof of payment has been received and your account has been credited, your eToll cards will be delivered you at an extra charge to or can be picked up from one of our designated offices.

When your etoll account balance runs low- you will need to make a payment to top up your account via the payment details referenced above

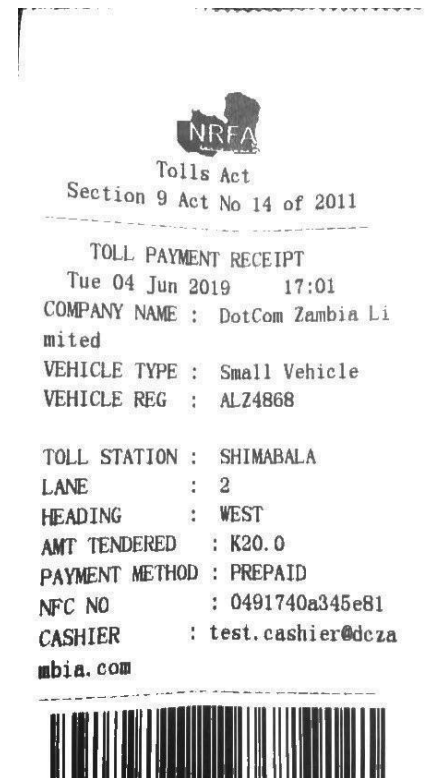
## **Step 4 :Using your Fuel Card**

Give your e-Toll Card to the Toll Attendant. The attendant will swipe the card against a POS machine. Wait for your card to be returned along with a receipt. Keep your receipt for reference purposes. The transaction is now complete

Every transaction paid is deducted from your etoll account balance. When your balance is low, the card can be topped up again by the administrator.

For any assistance, our wonderful staff is here to help!! Contact our Service Centre on +260962281630 or email [info@booknowzambia.com](mailto:info@booknowzambia.com)

Welcome to eToll!!



**Book Now Zambia is the largest Independent eToll and eFuel manager in Zambia (30 June 2022)**

  
**2000+**  
Individual  
App Users

  
**20,000+**  
Vehicles Managed

  
**300+**  
Corporate Fleet  
Accounts Managed

  
**4.0M+**  
Transactions  
processed

  
**March 1 2017**  
Date of First Transaction